

NAGPUR MUNICIPAL CORPORATION, Nagpur

(Public Works Department)

Quotation Notice

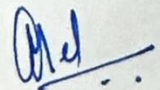
Notice inviting Quotation from reputed Agencies/ Entrepreneur/ Contractor/ Supplier for Non-CSR items of the following work. The Agencies/ Entrepreneur/ Contractor/ Supplier shall submit rates of this works in sealed envelopes to the office of the undersigned. The Agencies/ Entrepreneur/ Contractor/ Supplier should mention about taxes as applicable. Quotation is available on Nagpur Municipal Corporation, Nagpur Website (www.nmcnagpur.gov.in)




Name Of Work: Non- CSR Item rate required for Providing and Fixing inposition of Furniture for Metropolitan Public Health Surveillance Unit at DCHC Building K T Nagar Hospital, Nagpur.




- 1) These Non - CSR rates will be used for Estimation purpose only.
- 2) Right to reject any or all quotation without assigning any reason is reserved by the Municipal Commissioner N.M.C. Nagpur.
- 3) For any details regarding project, contact to Executive Engineer (Project 1) ,5 th floor NMC Building,Civil Lines, Nagpur 440001. Email ID- eeprojectnmc@gmail.com
- 4) Quotations submit before 29-07-2025 up to 16:00 Hrs
- 5) Quotations will be open on (If Possible) 29-07-2025 (17:00 Hrs)





Advt.No \PRO





Dt:/...../2025





Executive Engineer (Project 3)
Nagpur Mpl. Corporation, Nagpur




NAME OF WORK :- PROPOSED ESTIMATE OF FURNITURE WORK OF METROPOLITAN PUBLIC HEALTH SURVEILLANCE UNIT AT MUNCIPLE BUILDING NAGPUR BELONGS TO HELATH DEPARTMENT NMC,AT KT NAGAR HOSPITAL, NAGPUR								
Sr. no	Particular	Size			Nos.	Qty	Unit	Image
		L	W	H				
1	S.S. TABLE	1.2	0.6	0.75	4		Nos.	
	Restaurant tables made out of 20 gauge 2b finish 304 S.S. steel on table top and body of the table made out of 304 S.S. steel as per design, drawing and as per intructions of Architect.							
1-i	S.S. stool as per standerd				36		Nos.	
	Restaurant tables made out of 20 gauge 2b finish 304 S.S. steel on table top and body of the table made out of 304 S.S. steel as per design, drawing and as per intructions of Architect.							
2	Stainless steel laboratory table on sixth floor							
	Providing & fixing on site, a stainless steel laboratory table typically features a robust frame and a durable stainless steel top, chosen for its resistance to chemical reactions and corrosion, ease of cleaning. Common dimensions include a worktop customize length, a depth of 600-750mm, and a standard height of 800mm. Adjustable feet and a strong frame for stability. The material is typically stainless steel AISI-304, with a brushed finish.							
	One with sink	3.45	0.6	0.75	1		No.	
	One without sink	3.45	0.6	0.75	1		No.	
i	Material: Often a welded tube frame made of steel (e.g., 40x40mm A-frame tubes, 60x30x2mm beams).							
ii	Construction: A seamless welded A-frame construction is preferred for strength.							


iii	Finish: May be powder coated for added durability and aesthetics,colour as suggested							
iv	Stability: Adjustable feet are crucial for leveling the table on uneven surfaces.							
v	Work top: Stainless steel, typically AISI-304, known for its corrosion resistance, all chemical resistance and non-porous surface.							
vi	Finish: Brushed finish is common for easier cleaning.							
vii	Thickness: A common thickness is 13mm, providing a sturdy surface.							
3	PLASTIC CHAIR				16		Nos.	
	Stackable plastic chairs for Restaurant							
4	SOFA							
	Providing & fixing in position two seater and single sater sofas in 18 mm M.R. grade ply with cusion work of 40 density foam with with 50 mm rubber foam good quality upholstery with handle as per design and drawing.							
i	SOFA (2 SEATER)	1.50	0.75	0.45	8		Nos.	
ii	SOFA (1 SEATER)	0.90	0.75	0.45	6		Nos.	
5	CENTER TABLE	0.90	0.60	0.45	7		Nos.	
	Providing & Fixing in position centre tables made out of 19 mm th. MR gade PLY finished with 1 mm laminate of approved make shade colour texture in directed pattern. Toughend glass 8mm thick in tinted colour on top of the table. Hardware of good quality branded company etc. including all necesary accessories, 2 mm PVC lipping of same laminate color on all edges. Painting & melamine polishing, complete as per design instruction & direction.							



6	CORNER TABLES	0.60	0.60	0.45	7		Nos.	
	Providing & Fixing in position corner tables made out of 19 mm th. MR gade PLY finished with 1 mm laminate of approved make shade colour texture in directed pattern. Toughend glass 8mm thick in tinted colour on top of the table. Hardware of good quality branded company etc. including all necessary accessories, 2 mm PVC lipping on all edges match with the same color of laminate. Painting & melamine polishing, complete as per design instruction & direction.							
7	TABLES							
i	OFFICERS TABLE	2.1	0.9	0.75	1		No.	
	Providing & Fixing in position Tables made out of 19 mm th. MR gade PLY finished with 1 mm lamiante of approved make shade colour texture in directed pattern with balancing laminate matching with main laminate internally in drawers and cabinet. Cable Manaers, foot rest, shelf for C.P.U. with all fixtures and hardware of good quality branded company etc. with ready made key board drawer of approved make.including all necessary accessories, 2 mm PVC lipping of same laminate color on all edges. Painting & melamine polishing, complete as per design instruction & direction.							
8	EXECUTIVE TABLE	1.80	0.90	0.75	5		Nos.	
	Providing & Fixing in position Tables made out of 19 mm th. MR gade PLY finished with 1 mm lamiante of approved make shade colour texture in directed pattern with balancing laminate matching with main laminate internally in drawers and cabinet. Cable Manaers, foot rest, shelf for C.P.U. with all fixtures and hardware of good quality branded company etc. with ready made key board drawer of approved make.including all necessary accessories, 2 mm PVC lipping of same laminate color on all edges. Painting & melamine polishing, complete as per design instruction & direction.							
8-i	P A , OFFICERS & FACULTY TABLE	1.50	0.75	0.75	7		Nos.	
9	STAFF TABLE	1.20	0.60	0.75	8		Nos.	
10	STAFF TABLE	1.35	0.60	0.75	7		Nos.	
11	STAFF TABLE ATTCHED TO EACH OTHER	1.20	0.60	0.75	15		Nos.	

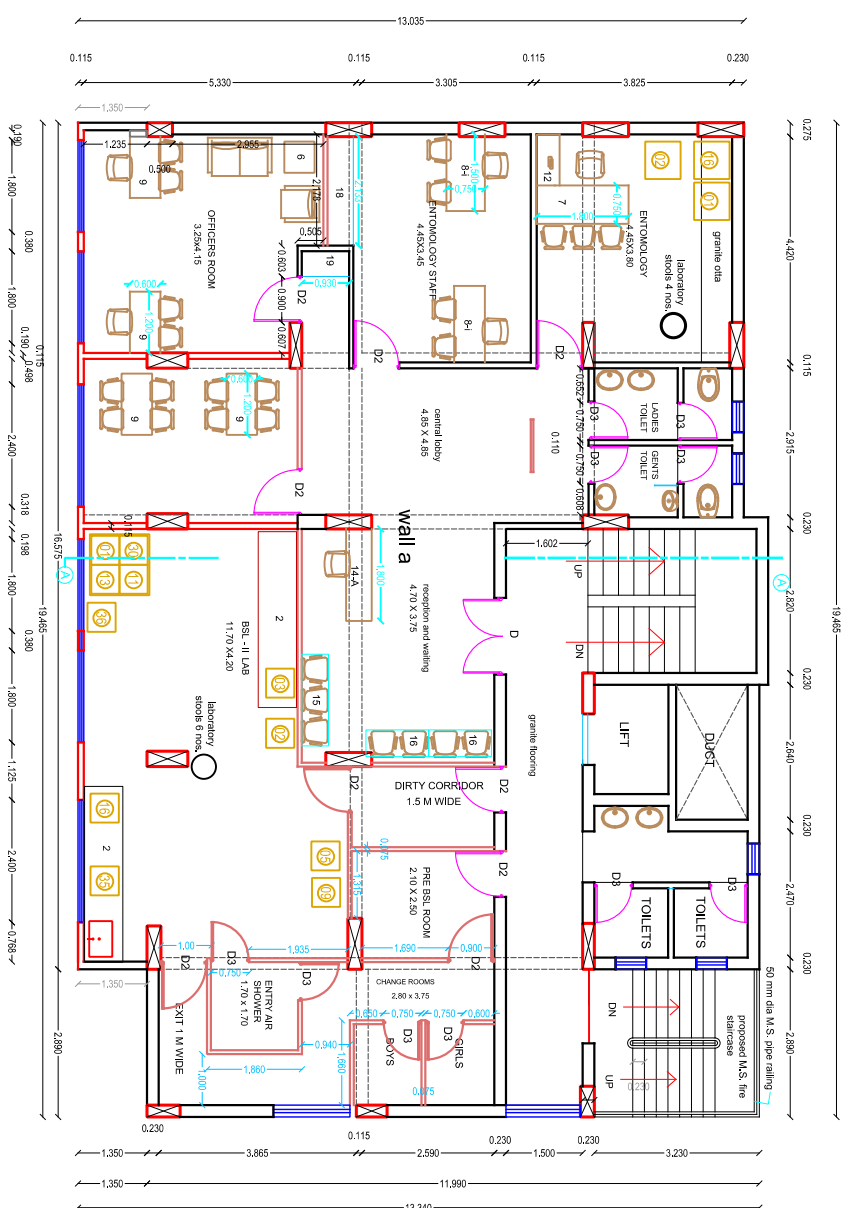
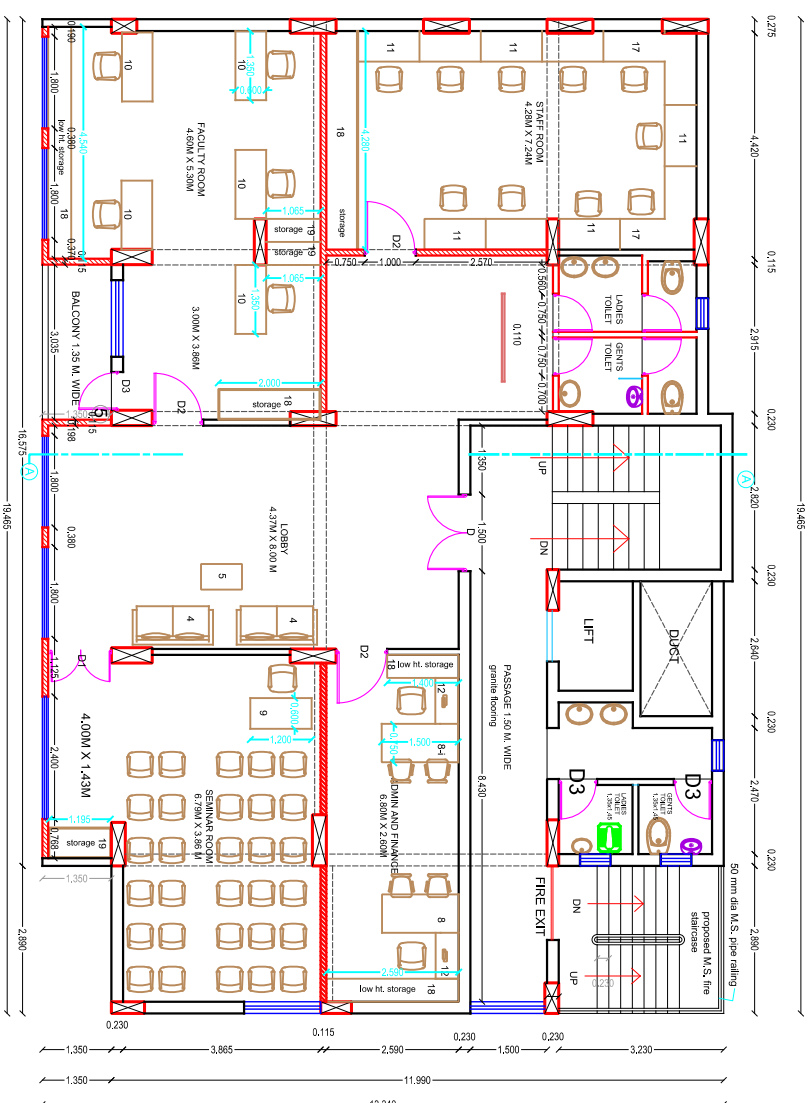
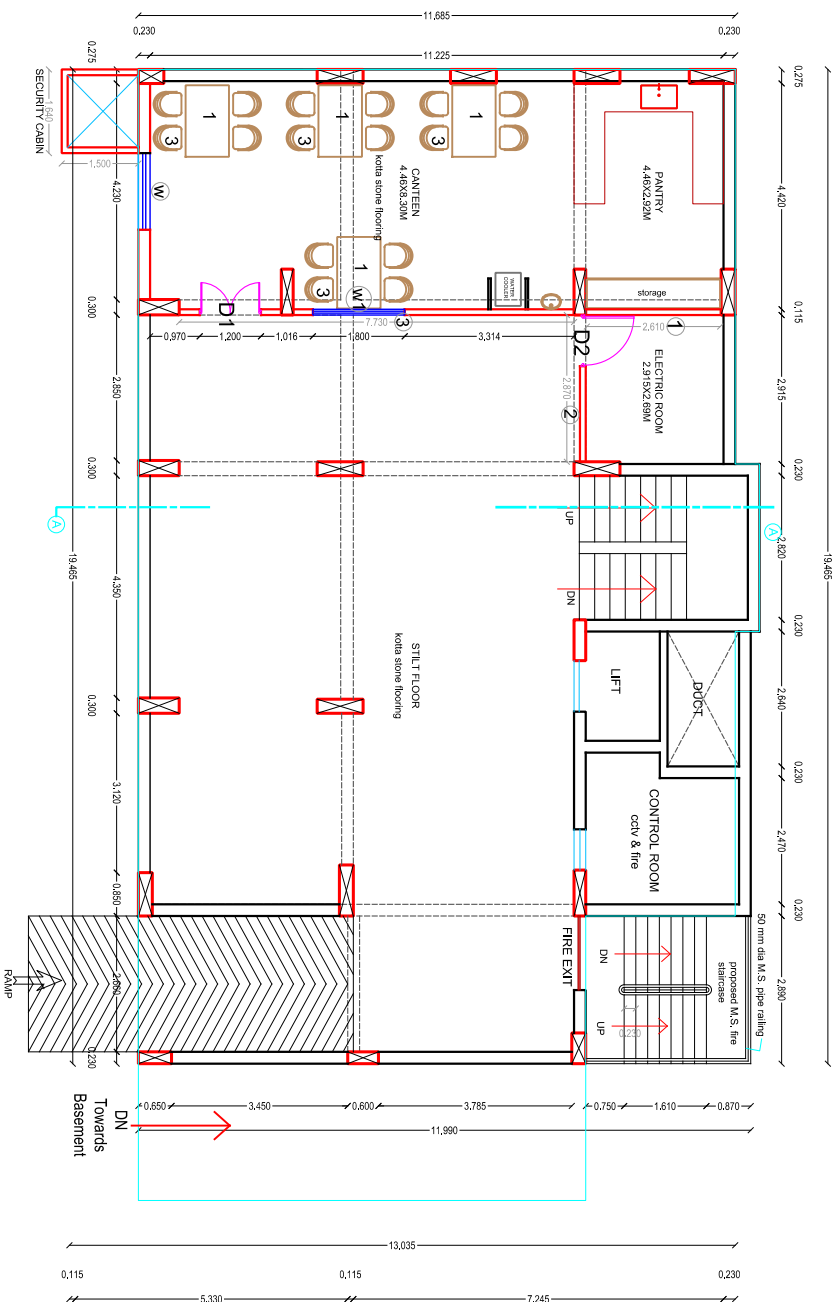
	Providing & Fixing in position Tables made out of 19 mm th. MR gade PLY finished with 1 mm laminates of approved make shade colour texture in directed pattern with balancing laminate matching with main laminate internally. Cable Manaers, foot rest, shelf for C.P.U. with all fixtures and hardware of good quality branded company etc. with ready made key board drawer of approved make.including all necessary accessories, 2 mm lipping on all edges. Including 8 mm thick toughen glass partition as per drawing. Painting & polishing, complete as per design instruction & direction.							
12	SIDE CABINET IN LAMINATE	1.00	0.45	0.75	11		Nos.	
	Providing & Fixing in position side tables made out of 19 mm th. MR gade PLY finished with 1 mm laminates of approved make shade colour texture in directed pattern with balancing laminate matching with main laminate internally. with all fixtures and hardware of good quality branded company etc. including all necessary accessories, 2 mm lipping on all edges. Painting & polishing, complete as per design instruction & direction.							
	RECEPTION TABLE							
13	RECEPTION TABLE 1st FLOOR	4.35	0.80	0.75	1		Nos.	
	Providing & Fixing in position Reception table made out of 19 mm th. MR gade PLY finished with 1.5 mm LAMINATE of approved make shade colour texture in directed pattern with balancing laminate matching with main laminate internally in drawers and cabinet. with all fixtures and hardware of good quality branded company etc. Table top of 12 mm thick solid surface as per drawing and design with all necessary accessories, veneer lipping on all edges. Painting & melamine polishing, complete as per design instruction & direction.							
14	RECEPTION TABLE 2nd FLOOR	1.80	0.50	0.75	1		Nos.	
	Providing & Fixing in position Reception table made out of 19 mm th. MR gade PLY finished with 1 mm laminates of approved make shade colour texture in directed pattern with balancing laminate matching with main laminate internally. with all fixtures and hardware of good quality branded company etc. including all necessary accessories, 2 mm lipping on all edges. Painting & polishing, complete as per design instruction & direction.							
14-A	RECEPTION TABLE - 6th FLOOR	1.80	0.60	0.75	1		Nos.	

	Providing & Fixing in position Reception table made out of 19 mm th. MR gade PLY finished with 1 mm laminates of approved make shade colour texture in directed pattern with balancing laminate matching with main laminate internally. with all fixtures and hardware of good quality branded company etc. including all necessary accessories, 2 mm lipping on all edges. Painting & polishing, complete as per design instruction & direction.							
	S.S. BENCH							
	304 S.S. bench made out of 20 gauge 2b finish perforated sheet and body made out of 304 S.S. steel as per design, drawing and as per intructions of Architect.							
15	WAITING AREA S.S. BENCH (THREE SEATER)	1.65	0.50	0.45	9		Nos.	
16	WAITING AREA S.S. BENCH (TWO SEATER)	1.10	0.50	0.45	10		Nos.	
17	CORNER TABLES	2.05	0.60	0.75	2		Nos.	
	Providing & Fixing in position Tables made out of 19 mm th. MR gade PLY finished with 1 mm laminates of approved make shade colour texture in directed pattern with balancing laminate matching with main laminate internally. Cable Manaers, foot rest, shelf for C.P.U. with all fixtures and hardware of good quality branded company etc. with ready made key board drawer of approved make.including all necessary accessories, 2 mm lipping on all edges. Painting & polishing, complete as per design instruction & direction.							
18	FILE CABINETS							
	LOW HT. FILE CABINET							

	Providing & Fixing in position low ht. cabinet made out of 19 mm th. MR gade PLY finished with 1 mm laminates of approved make shade colour texture in directed pattern with balancing laminate matching with main laminate internally. with all fixtures and hardware of good quality branded company etc. including all necessary accessories, 2 mm lipping on all edges. Painting & polishing, complete as per design instruction & direction.							
	Second floor	3.75	0.45	0.75	1	3.75	rmt	
	Second floor	4.00	0.45	0.75	1	4.00	rmt	
	Second floor	2.85	0.45	0.75	1	2.85	rmt	
	Third floor	2.00	0.45	0.75	1	2.00	rmt	
	Third floor	4.54	0.45	0.75	1	4.54	rmt	
	Third floor	2.59	0.45	0.75	1	2.59	rmt	
	Third floor	1.40	0.45	0.75	1	1.40	rmt	
	Third floor	4.28	0.45	0.75	1	4.28	rmt	
	Forth floor	2.82	0.45	0.75	1	2.82	rmt	
	Fifth floor	4.50	0.45	0.75	1	4.50	rmt	
	Fifth floor	2.60	0.45	0.75	1	2.60	rmt	
	Fifth floor	1.40	0.45	0.75	1	1.40	rmt	
19	FULL HT CABINET							
	Providing & Fixing in position File cabinets made out of 19 mm th. MR gade PLY finished with 1 mm laminates of approved make shade colour texture in directed pattern with balancing laminate matching with main laminate internally. with all fixtures and hardware of good quality branded company etc. including all necessary accessories, 2 mm lipping on all edges. Painting & polishing, complete as per design instruction & direction.							
	Third floor	1.07	0.45	2.40	2	2.13	rmt	
	Third floor	1.20	0.45	2.40	1	1.20	rmt	
	Forth floor	1.65	0.45	2.40	1	1.65	rmt	
	Forth floor	2.85	0.45	2.40	1	2.85	rmt	
	Forth floor	1.23	0.45	2.40	2	2.46	rmt	
	Fifth floor	1.20	0.45	2.40	2	2.40	rmt	
	Sixth floor	2.13	0.45	2.40	2	4.26	rmt	

	Sixth floor	0.93	0.45	2.40	2	1.86	rmt	
20	CONFERENCE TABLE							
	Providing & Fixing in position Conference table made out of 19 mm th. MR gade PLY & C.P teak wood, finished with 4 mm veneer of approved make shade colour texture in directed pattern with balancing laminate matching with main laminate internally with all fixtures and hardware of good quality branded company etc. including all necessary accessories, veneer lipping on all edges. Painting & melamine polishing, complete as per design instruction & direction.	5.00	1.50	0.75		7.50	sq.m.	
21	WALL PANELLING							
	Providing & Fixing in position WALL PANELLING for covering the AC outlet, electrical pipes and pelmet over windows for fixing of AC indoor unit etc. made out of 19 mm th. MR gade PLY finished with 1 mm laminates of approved make shade colour texture in directed pattern with all fixtures and hardware of good quality branded company etc. including all necessary accessories, 2 mm lipping on all edges. Painting & polishing, complete as per design instruction & direction. Panelling fixed to the wall with mirror screw with 12 dia cap over the screw, so that panelling can removed				L.S.	300.00	sq.m.	
	CHAIRS							
22	OFFICERS CHAIR					1	Nos.	
22-i	EXECUTIVE CHAIR REVOLVING LOW BACK					5	Nos.	
23	PA & FACULTY CHAIR					7	Nos.	
24	STAFF CHAIR					32	Nos.	
25	RECEPTION CHAIRS					3	Nos.	
26	VISITORS CHAIR					24	Nos.	
27	VISITORS CHAIR FOR OTHER STAFF					30	Nos.	
28	SEMINAR ROOM CHAIR					24	Nos.	
29	CONFERENCE TABLE CHAIR for executive					11	Nos.	
30	CONFERENCE ROOM CHAIR					12	Nos.	
31	SANITIZER STAND IN S. S.					7.00	Nos.	
32	SUGGESTION BOX					2.00	Nos.	
33	ROLLER BLINDS					135	sq.m.	
34	STEEL ALMIRAH							

35	Godrej or equivalent make steel almirah for office purpose					7.00	nos.	
36	Cabinet below Laboratory otta (granite otta) sizes about 900 x 550 x 750							
	Providing & Fixing in position cabinets below granite otta (Lab otta) made out of 19 mm th. MR gade PLY finished with 1 mm laminates of approved make shade colour texture in directed pattern with balancing laminate matching with main laminate internally. Cabinet must have 50mm high skirting, one adjstable shelf in alternate portion and one 150 mm ht. drawer in each portion. (each portion will be about 900 mm) Cabinet will be covered with laminated shutter as per drawing and design. finished with all fixtures and hardware of good quality branded company etc. including all necessary accessories, 2 mm lipping on all edges. Painting & polishing, complete as per design instruction & dimension							
	Impotant Note:							
	1) All furniture (except Steel almirah, Chairs, S.S. benches, sofa & Canteen S.S. table) should be in waterproof MR garde ply only.							
	2) All furniture should be customised Moduler.							
	3) Furniture should have high class finishing and workmanship.							
	4) Befor going to build the furniture, please check the measurmnt on site.							
	5) Diamensions given in the drawing with the specifications are given for evalution purpose.							
	6) Before going to build all the furniture, beeder should make sample of furniure and get approved from NMC authorities and PMC.							
	7) NMC authorities and PMC will finalised color combination and selection of laminate.							
	8) Beeder must be ready to do the work on site other than above listed item, if it is required on site, payment will be done as per rate analysis.							
	9) Beeder must be ready to do the work on site other than above listed item, if it is required on site, payment will be done as per rate analysis.							
	10) Above given images are for refrence only, drawing and design of furniture will be provided separatly							
	11) Quantity of roller blinds and quantity of wall panelling may vary at the time of working, before going to start the work quantities, get it checked from the authorities.							



NORTH

Sheet No.-1

Drawing showing furniture layout plan with proposed alteration at plot no. 409/A, DCHC building K.T. Nagar, Nagpur.

Belonging to: Nagpur Municipal Corporation, Nagpur.

Index	Particulars	
Sr. no.		
1	S.S. table	1.20 x 0.60 x 0.75
2	S.S. path-tab table	3.45x 0.60 x 0.80
3	Plastic Chair	0.45 x 0.50 X0.45
4	Sofa - 2 seater	1.75 x 0.75 x 0.40
4-1	Sofa - 1 seater	0.65 x 0.75 x 0.40
5	Center table	0.90 x 0.60 x 0.45
6	Corner table of sofa	0.60 x 0.60 x 0.45
7	Officers table	2.10 x 0.90 x 0.75
8	Executive table	1.80 x 0.60 x 0.75
8-1	PA & faculty table	1.50 x 0.60 x 0.75
9	Staff table	1.20 x 0.60 x 0.75
10	Staff table	1.35 x 0.60 x 0.75
11	Staff table attached to each other	1.20 x 0.60 x 0.75
12	Side cabinet	1.00 x 0.45 x 0.75
13	Reception table 1st floor	4.35 x 0.80 x 0.75
14	Reception table 2nd floor	1.80 x 0.50 x 0.75
15-A	Reception table 6th floor	1.80 x 0.60 x 0.75
15	Waiting area S.S. bench 3 seater	1.65 x 0.50 x 0.45
16	Waiting area S.S. bench 2 seater	1.10 x 0.50 x 0.45
17	Corner table of no. 11	2.05 x 0.60 x 0.75
18	Low ht. file cabinet	As per measurement on site
19	Full ht. cabinet	As per measurement on site
20	Conference table	5.00 x 1.50 x 0.75
21	Wall panelling	As per measurement on site

Architect's sign

Trilok Thakre
Samadhan Group
M-4A, Premium plaza, mata mandir road, Dharampeth,
Nagpur. - 10
Email: samadhangrp@gmail.com
Mobile no. 9373102334

Scale	Date	drawn by	Sheet no.	revision	North 
1:100, 1:200	16-11-2024	Ajit	01	0	



Drawing showing furniture layout plan with proposed alteration at plot no. 409/A, DCHC building K.T. Nagar, Nagpur.

Belonging to: Nagpur Municipal Corporation, Nagpur.

Index		
Sr. no	Particulars	
1	S.S. table	1.20 x 0.60 x 0.75
2	S.S. path-lab table	3.45x 0.60 x 0.80
3	Plastic Chair	0.45 x 0.50 x0.45
4	Sofa - 2 seater	1.75 x 0.75 x 0.40
4-i	Sofa - 1 seater	0.65 x 0.75 x 0.40
5	Center table	0.90 x 0.60 x 0.45
6	Corner table of sofa	0.60 x 0.60 x 0.45
7	Officers table	2.10 x 0.90 x 0.75
8	Executive table	1.80 x 0.60 x 0.75
8-i	PA & faculty table	1.50 x 0.60 x 0.75
9	Staff table	1.20 x 0.60 x 0.75
10	Staff table	1.35 x 0.60 x 0.75
11	Staff table attached to each other	1.20 x 0.60 x 0.75
12	Side cabinet	1.00 x 0.45 x 0.75
13	Reception table 1st floor	4.35 x 0.80 x 0.75
14	Reception table 2nd floor	1.80 x 0.50 x 0.75
15-A	Reception table 6th floor	1.80 x 0.60 x 0.75
15	Waiting area S.S. bench 3 seater	1.65 x 0.50 x 0.45
16	Waiting area S.S. bench 2 seater	1.10 x 0.50 x 0.45
17	Corner table of no. 11	2.05 x 0.60 x 0.75
18	Low ht. file cabinet	As per measurement on site
19	Full ht. cabinet	As per measurement on site
20	Conference table	5.00 x 1.50 x 0.75
21	Wall panelling	As per measurement on site

Trilok Thakre
Samadhan Group
M-4A, Premium plaza, mata mandir road, Dharampeth,
Nagpur. - 10
Email: samadhangrp@gmail.com
Mobile no. 9373102334

Scale	Date	drawn by	Sheet no.	revision	North
1:100, 1:200	16-11-2024	Ajt	01	0	