



Draft Ward Formation For General Election - 2025- Nagpur Municipal Corporation

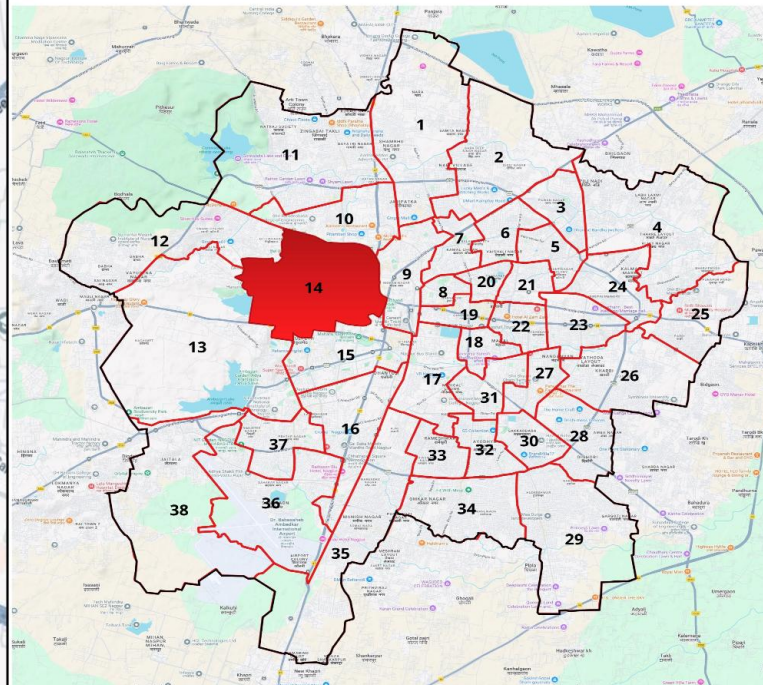


Ward : 14

Ward Population

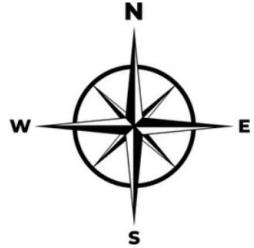
Total Population	60771
SC Population	11613
ST Population	5468

Key Map - Nagpur



Legend

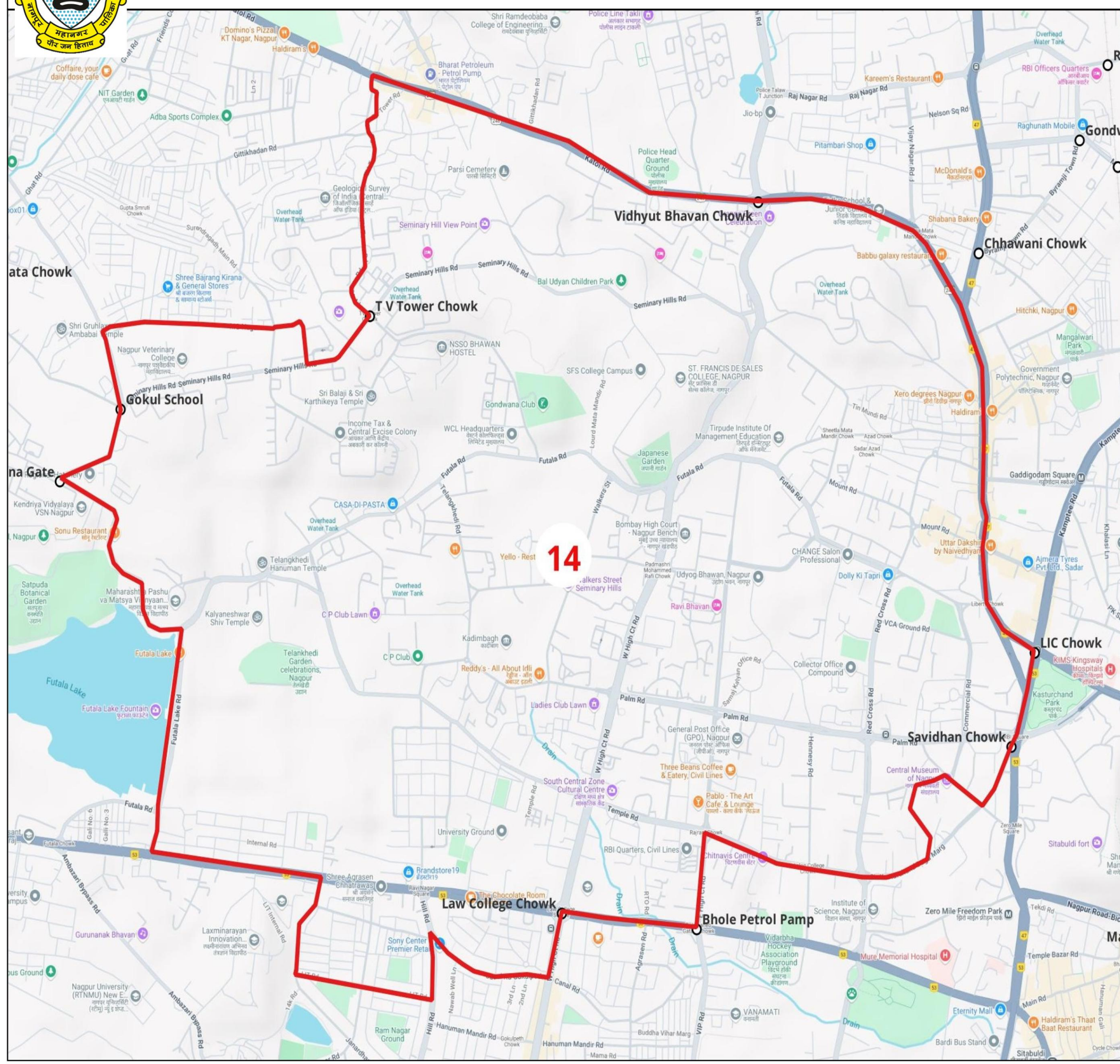
- Ward
- MC Boundary
- Road
- National Highway
- Railway Line
- River



Dy. Director (Town Planning)  
Nagpur Municipal Corporation

Commissioner  
Nagpur Municipal Corporation

Dy. Commissioner (Election)  
Nagpur Municipal Corporation

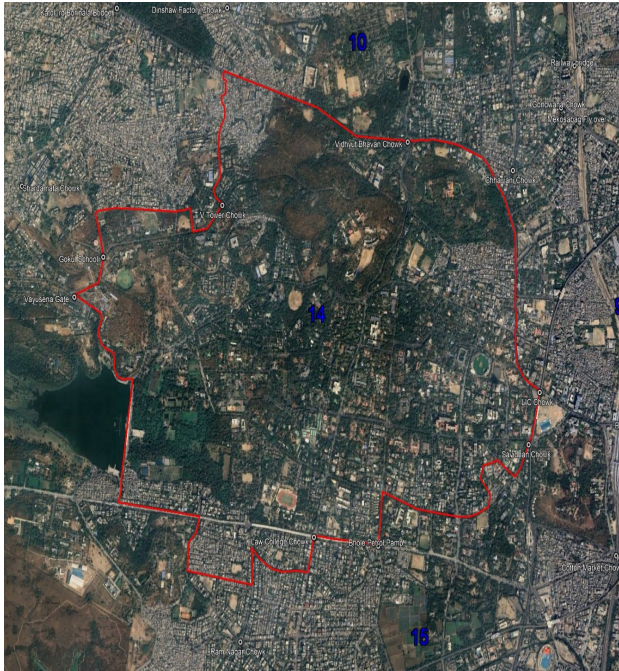




प्रभाग क्रमांक व लोकसंख्या	प्रभागाचे नाव असल्यास	प्रभागाची व्याप्ती	प्रभागाच्या सीमा	निवडून द्यावयाच्या सदस्यांची संख्या
1	2	3	4	5
प्रभाग क्रमांक - 14 लोकसंख्या - 60771 अ.जा. - 11613 अ.ज. - 5468		राजभवन परिसर, निर्मला हॉस्टेल, सदर, गांधी चौक, आझाद चौक, गवळीपुरा गोंड मोहल्ला, खाटीकपूरा, म.न.पा. मुख्यालय परिसर, न्याय मंदीर, व्ही.सी.ए., रेल्वे अधिकारी वसाहत, रेल्वे क्लब, सराफ चेंबर, ऑल सेंट चर्च, टायगर गॅप मैदान, बिजली नगर, तिरपूडे कॉलेज परिसर, गिट्टीखदान चा दक्षिण भाग, आझाद नगर, कृष्ण नगर, सि.पी.डब्ल्यू.डी. क्वॉटर्स, बालोद्यान, सेंटर पॉईंट स्कूल, एस.एफ.एस. कॉलेज, जापानी गार्डन, रवि नगर, भरत नगर, राम नगर, मरार टोळी, सी.पी.क्लब, रिजर्व बँक कॉलोनी तेलंगखेडी परिसर, फुटाळा वस्तीचा काही भाग, टिळक नगर, सिव्हील लाईन्स, विद्यापीठ परिसर, प्रियदर्शनी कॉलोनी रामगीरी, हायकोर्ट, विभागीय आयुक्त कार्यालय, विजय क्लब, 16 खोल्यांचे गाळे, आमदार निवास, रवि नगरचा पूर्व भाग.	<p><b>उत्तर:</b> काटोल रोडवरील श्री. भोजराज सोमकुवर यांचे घराजवळील (इ.पो.क्र. Gk/B-1) जवळील आय. बी. एम. रोड वरील टि-पॉईंटपासून पूर्वेकडे काटोल रोडने विद्युत भवन चौकापर्यंत व पुढे रस्त्याने अचरज टावर जवळील छिंदवाडा रोड टि-पॉईंटपर्यंत.</p> <p><b>पूर्व:</b> काटोल रोडवरील अचरज टावर जवळील छिंदवाडा रोड टि-पॉईंटपासून दक्षिणेकडे रस्त्याने अॅड. सखारामपंत मेश्राम चौक मार्गे लिबर्टी सिनेमा समोरील टि-पॉईंटपर्यंत, नंतर वळणमार्गाने एल. आय. सी. चौकापर्यंत, नंतर दक्षिणेकडे रिझर्व बँक चौक मार्गे (संविधान चौक) भवन्स शाळेजवळील चौकापर्यंत, नंतर वायव्येकडे मध्यवर्ती संग्रहालयापर्यंत, पुढे पश्चिमेकडे अन्न धान्य वितरण कार्यालयजवळील नाल्याच्या पूलापर्यंत, नंतर दक्षिणेकडे नाल्याने नाग विदर्भ चेंबर ऑफ कॉमर्सच्या पूलापर्यंत.</p> <p><b>दक्षिण:</b> नाग विदर्भ चेंबर ऑफ कॉमर्सच्या पूलापासून पश्चिमेकडे रिझर्व बँक वसाहत चौकापर्यंत नंतर दक्षिणेकडे व्ही. आय. पी. रस्त्याने अमरावती मार्गावरील भोळे पेट्रोल पंप चौकापर्यंत, नंतर पश्चिमेकडे अमरावती मार्गाने लॉ-कॉलेज चौकापर्यंत, नंतर दक्षिणेकडे वेस्ट हायकोर्ट रोडने लोटस बिल्डींग जवळील नाल्याच्या पूलापर्यंत, नंतर पश्चिमेकडे कॅनल रोडने रवि नगर रोडवरील सोनी शोरूम टि-पॉईंटपर्यंत, नंतर दक्षिणेकडे रामनगर रस्त्याने श्री. विलासराव देशमुख इंजिनिअरिंग कॉलेज कार्यालयासमोरील टि-पॉईंटपर्यंत, नंतर पश्चिमेकडे रामनगर रस्त्याने नेल्सन मंडेला हॉस्टेल समोरील टि-पॉईंटपर्यंत(इ.पो.क्र. B/532/E), नंतर उत्तरेकडे एल. आय. टी. भिंतीलगतच्या रस्त्याने अमरावती मार्गावरील गणेश टॉवर समोरील चौकापर्यंत व पुढे पश्चिमेकडे अमरावती मार्गाने फुटाळा रस्ता टी-पॉईंट (इ.पो.क्र. B/554) पर्यंत.</p> <p><b>पश्चिम:</b> अमरावती मार्गावरील फुटाळा टि-पॉईंट(इ.पो.क्र. B/554) पासून उत्तरेकडे फुटाळा तलाव रस्त्याने टेंपल रोडवरील टि-पॉईंट(इ.पो.क्र. VN/34) पर्यंत, नंतर वायव्य दिशेच्या वळण मार्गाने वायुसेना गेटच्या व्ही-पॉईंटपर्यंत, नंतर ईशान्य दिशेने हायलँड ड्राईव्ह रस्त्याने आकार नगरकडे जाणाऱ्या रस्त्याच्या टि-पॉईंटपर्यंत, नंतर वायव्य दिशेने उत्तर रस्त्याने मानवसेवा नगर (इ.पो.क्र. BZI/109/E) पर्यंत, नंतर पूर्वेकडे व्हेटरनरी कॉलेज परिसराच्या मागील रस्त्याने एम. ई. सी. एल. गेस्ट हाऊस कंपाऊंड भिंतीच्या ईशान्य कोपऱ्यापर्यंत, नंतर दक्षिणेकडे कंपाऊंड भिंतीने हायलँड ड्राईव्ह वरील सी. पी. डब्ल्यू. डी. बंगला क्र. 10/1 व 10/2 समोर, नंतर रस्त्याने ईशान्य दिशेने टि. व्ही. टॉवर चौकापर्यंत, नंतर उत्तरेकडे आय.बी.एम. रस्त्याने श्री. मुकेश गायधने (इ.पो.क्र. TK/B/28) यांचे घरापर्यंत नंतर ईशान्य दिशेने रस्त्याने श्री. एम.एन.यादव (इ.पो.क्र. PN/B-14) त्यांचे घरापर्यंत, नंतर उत्तरेकडे रस्त्याने श्री. गायकवाड (इ.पो.क्र. PN/B-17B) यांचे घरापर्यंत, नंतर पश्चिमेकडे आय. बी. एम. रोडवरील श्री. सोंदवा नंतर उत्तरेकडे आय. बी. एम. रोडने श्री. भोजराज सोमकुवर (इ.पो.क्र. Gk/B-1) यांचे घराजवळील टि-पॉईंटपर्यंत.</p>	4

Ward No. & Population	Name of Ward, If any	Extend of Ward (Location)	Ward Boundary	Number of Councilors to be elected
1	2	3	4	5
<b>Ward No.:- 14</b>  <b>Population:- 60771</b>  <b>SC:- 11613</b>  <b>ST:- 5468</b>		<b>Raj Bhavan Area, Nirmala Hostel, Sadar, Gandhi Chowk, Azad Chowk, Gawlipura Gond Mohalla, Khatikpura, N.M.C. Headquarters Area, Nyay Mandir, V.C.A., Railway Officers Colony, Railway Club, Saraf Chamber, All Saints Church, Tiger Gap Ground, Bijli Nagar, Tirpude College Area, Southern part of Gittikhadan, Azad Nagar, Krishna Nagar, C.P.W.D. Quarters, Balodyan, Centre Point School, S.F.S. College, Japanese Garden, Ravi Nagar, Bharat Nagar, Ram Nagar, Marar Toli, C.P. Club, Reserve Bank Colony Telangkhedi Area, Part of Futala Settlement, Tilak Nagar, Civil Lines, University Area, Priyadarshini Colony Ramgiri, High Court, Divisional Commissioner Office, Vijay Club, 16 Room Sheds, MLA Residence, Eastern part of Ravi Nagar.</b>	<p><b>North: -</b> From I.B.M road T-Point near house of Shri. Bhojraj Somkuwar (E. P. No. GK/B-1) on Katol road towards East along Katol road upto Vidyut Bhavan square on Katol road. Then along same road upto Chhindwara road T-Point near achrach Tower</p> <p><b>East: -</b> From Chhindwara road T-Point near Achraj Tower on Katol road towards South along Katol road via Adv. Sakharampant Meshram square upto T-Point near liberty Cinema. Then towards South-East along the road curvature upto LIC. Square. Then towards South along the road via Samvidhan Square upto Square near Bhawans School. Then towards West along the road upto Cental Musium. Then towards West along road upto bridge over Nallah near FDO (Rsahaning) Office. Then towards South along the nallah upto bridge near Nag Vidharbha Chamber of Commerce.</p> <p><b>South: -</b> From bridge on nallah near nagpur Vidarbha Chambers of Commerce towards West along the road upto RBI Colony square. Then towards South along the VIP road upto Bhole Petrol Pump Square on Amravati road. Then towards West along Amravati road upto Law College Square. Then towards South along the West High Court road Bridge on Nallah near Lotus building. Then towards West along the Canal road upto T-Point near Sony showroom. Then towards South along the Ramnagar Road upto T-Point infront office of Shri. Vilasrao Deshmukh College of Enggineering. Then towards West along the Ram Nagar Road upto T-Point infront of Nelson Mandela Hostel E.P.No. B/532/E. Then towards North along the road Parallel to LIT compound Wall upto square on Amravati road infront of Ganesh Tower. Then towards West along the Amravati road upto T-Point on Futala road E.P. No. B/554.</p> <p><b>West: -</b> From Futala road T-Point (E.P. No.B/554)on Amravati road towards North along the Futala Tank road upto T-Point on Temple road(E.P. No.VN/34). Then towards North-West along the road curvature upto Vayusena Gate V-Point. Then towards North-East High Land Drive road upto t-Point on Aakar nagar road. Then towards North-West along the Slope road upto Manseva Nagar (E.P.No. BZI/109/E). Then towards East along the Veternary College Campus behind road via MECL gate upto North-East Corner of MECL compound wall. Then towards South along the compound wall upto CPWD Bunglow No. 10/1, 10/2 on High Land Drive road. Then towards North-East along the road upto T. V. Tower square. Then towards North along the IBM road upto house of Mukesh Gaidhane (E.P. No. TK/B/28). Then towards North-East along road upto house of M. S. Yadao (E.P. No. PN/B-14). Then towards North along the road upto house of Shri. Gaikawad (PN/B-17B). Then towards West along Road upto house of Shri. Sondava on IBM road. Then towards North along the IBM road upto T-Point near Shri. Bhoraj Somkuwar (E.P. No. GK/B-1).</p>	<b>4</b>

**DRAFT WARD FORMATION FOR GENERAL ELECTION - 2025- NAGPUR MUNICIPAL CORPORATION.**



प्रभाग क्र.  
**14**

**लोकसंख्या**  
एकूण - 60771  
अ.जा. - 11613  
अ.ज. - 5468



उत्पाद

राजमनन परिसर, रिजिनी कॉलोनी, नरस, गांधी रोड, आन्ध्र प्रदेश, बन्धुवर्षा, बन्धुवर्षा कोलेज, आन्ध्रप्रदेश, रा.म.प. मुख्यालय परिसर, नरस, मन्दी, को.रो.ए., रेवेड अफिशरी नगर, रेवेड नगर, सराव रोड, ओल कोल रोड, टायगर सी रोड, बिजुली नगर, विरारुपे नगर परिसर, रिजिनीवर्षा, रा.म.प. आन्ध्र नगर, कृष्ण नगर, सि.पि.उपग्रह, बल्लोवन, सेक्टर ३३ईत वृक्ष, सूर्यक.एस. कोलोनी, जयवंत कर्टन, रा.नगर, मरत नगर, राम नगर, को.रो.सी.बी.एस, रिजिनी बी कॉलोनी (लोकेश्वरी परिसर), कृष्णवती को.रो.सी.उपग्रह, टिडक नगर, सिविली लून्वन्, विरारुपे परिसर, बिन्दरनी कॉलोनी रामजीरी, हायकोर्ट, विमणीय अजुनर कार्यालय, बिजय वरस, १६ कोल्पाये गांधी, आन्ध्र नगर, रा.नर नगर पूर्व भाग

उत्तर: काटोल रोडवरील श्री. भोजराज वाकनकर यांचे घराजवळील (ह.प.क्र. GK/B-1) जवळील अ.य. श्री. एम. रोड वरील टि-पॉइंटजवळ फुडकडे काटोल रोडम वळतून भवन मीनारमधील व फुडे रस्त्याने अवरज टावर जवळील शिंदेवाड रोड टि-पॉइंटपर्यंत.

[illegible][illegible][illegible]

**Location**  
Raj Bhavan Area, Nirmala Hostel, Sadar, Gandhi Chowk, Azad Chowk, Gawlipur Gond Mohalla, Khatikpura, N.M.C. Headquarters Area, Nyay Mandir,  
165 A, Pathways Offices Colony, Sullury Club, Grand Chamber, All India Chamber, Bazar Con-Second, B.M. Nagar, Simada College Area, Con-Market

## Location

Raj Bhavan Area, Nirmla Hostel, So. Gandhi Chok, Azad Chok, Gawlipura Gurd Mohalla, Khattipura, N.M.C. Headquarters Area, Nyay Mandir, V.A. Railway Offices Colony, Railway Club, Saraf Chamba, All Saints Church, Tiger Gap Ground, Bill Nagar, Tirpude College Area, Southern part of Gittikhadan, Azad Nagar, Krishna Nagar, C.P.W.D. Quarters, Balodyan, Centre Point School, S.F.S. College, Japanese Garden, Ravi Nagar, Bharat Nagar, Ram Nagar, Marar Toll, C.P. Club, Reserve Bank Colony Telangahadi Area, Part of Futala Settlement, Tilak Nagar, Civil Lines, University Area, Priyadarshini Chok Ramgiri, High Court, Divisional Commissioner Office, Vijay Club, 16 Room Sheds, M.A Residence, Eastern part of Ravi Nagar.

**North** -From I.B.M road T-Point near house of Shri. Bhojraj Somkuwar (E. P. No. GK/B-1) on Katol road towards East along Katol road upto Vidyut Bhavan square on Katol road. Then along same road upto Chhindwara road T-Point near achrach Tower

**East** – From Chhindwara road T-junction near Achraj Tower on Katol road towards South along Katol road via Adv. Sakharampant Meshram square upto T-Point near Liberty Cinema. Then towards South-East along the road curvature upto LIC. Square. Then towards South along the road via Samvidhan Square upto Square near Bhawans School. Then towards West along the road upto Central Museum. Then towards West along road upto bridge over Nallah near FDO (Rahani) Office. Then towards South along the nallah upto bridge near Nag Vidharbha Chamber of Commerce.

**South** – From bridge on Nallah near Nagpur Vidarbha Chambers of Commerce towards West along the road upto RBJ Colony square. Then towards South along the VIP road upto Bhole Petrol pump square on Amravati road. Then towards West along Amravati road upto Law College square. Then towards South along the West High Court road Bridge on Nallah near Lotus building. Then towards West along the Canal road upto T-Point near Sony Showroom. Then towards South along the Ramnagar Road upto T-Point infirmary office of Shri. Vilasrao Deshmukh College of Engineering. Then towards West along the Ram Nagar Road upto T-Point infirmary of Nelson Mandela Hostel E.P.No. B/532/E. Then towards North along the road Parallel to LIT compound Wall upto square on Amravati road infirmary of Ganesh Tower. Then towards West along the Amravati road upto T-Point on Futala road E.P. No. B/554.

**West** - From Futala road T-Point (E.P. No. B/554) along the Aruvatti road towards North along the Futala Tank road up to T-Point on Temple road (E.P. No. VN/34). Then towards North-West along the road connecting to Yajurveda Gate V-Point. Then towards North-East High Land Drive road up to T-Point on Asakar nagar road. Then towards North-West along the Slope road up to Manseva Nagar (E.P. No. BZ1/09/E). Then towards East along the Veterinary College Campus behind road via MECL gate up to North-East Corner of MECL compound. Then towards South along the compound wall up to CPWD Bunglow No. 10/1, 10/2 on High Land Drive road. Then towards North-East along the road to T. V. Tower square. Then towards North along the IBM road up to house of Mukesh Gadhalne (E.P. No. TK/28/29). Then towards North-East along road up to house of M. S. Yadao (E.P. No. PNW-14). Then towards North along the road up to house of Shri. Galkawh (PNW-14). Then towards West along road up to house of Shri. Sondava on IBM road. Then towards North along the IBM road up to T-Point near Shri. Bhoraj Somkarwar (E.P. No. GK/18).

मा. राज्य निवडणूक आयोग यांचे पत्र क्र. रानिआ/मनपा-2025/प्र.क्र.36/का-5, दि. 22/08/2025 अन्वये मा. राज्य निवडणूक आयुक्त यांचे स्वाक्षरी व आदेशानुसार